



HOW CAN YOU BE SURE

YOUR PRODUCTS ARE PACKAGED CORRECTLY?

No doubt there is a lot that can go wrong when packaging your product. From vendor errors to setup issues, too much is at stake to leave it to chance. This is why companies are using the SurePack packaging verification solution.

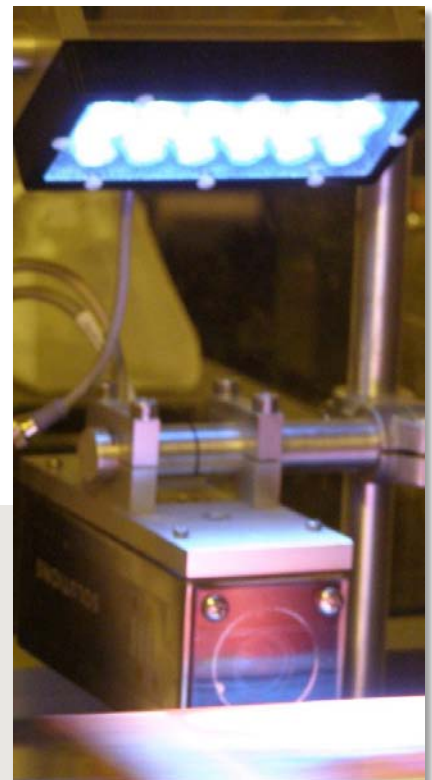
SurePack is an easy to use, easy to deploy solution. This system alerts operators to common production issues to prevent incorrect ingredients, products, containers, pouches, cartons, cases and labels from shipping to your customers.

Detect errors such as...

- ✗ Putting the product into the wrong package*
- ✗ Threading incorrect paper or film into equipment*
- ✗ Loading incorrect labels into automatic applicators*
- ✗ Using ingredients past expiration*
- ✗ Loading of wrong cartons into erectors*
- ✗ Marking incorrect data with printers and lasers*
- ✗ Shipping degraded or unreadable barcodes*

...Before they cost you more!

- ✓ Assure customer safety and satisfaction*
- ✓ Avoid expensive recalls*
- ✓ Reduce scrap by immediately identifying setup errors*
- ✓ Comply with FDA guidance*
- ✓ Keep productivity high with proven verification technology*



SurePack™

Apply the best identification technologies to each package, product, and container.



SurePack can read and grade a wide variety of two-dimensional codes.



Use existing visual patterns, such as images, logos, and cursive text, to verify product type. SurePack will confirm the uniqueness of each pattern trained. SurePack ignores inconsistent lighting and ambient dust, issues that might otherwise cause false failures.



Read all common barcode formats – as well as grade barcode quality.



Verify text on packaging materials, even when characters have low contrast. Characters may read left-to-right or top-to-bottom.



Inquire about the optional RFID reader interface, ideal for verifying the content of bulk containers.

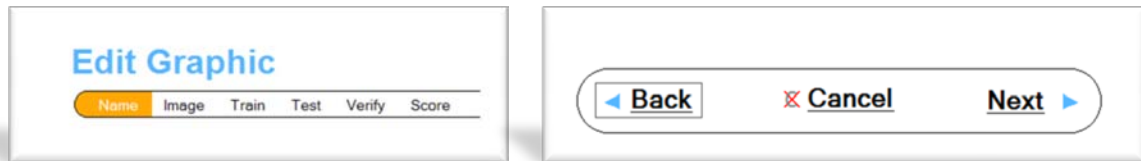


SurePack™

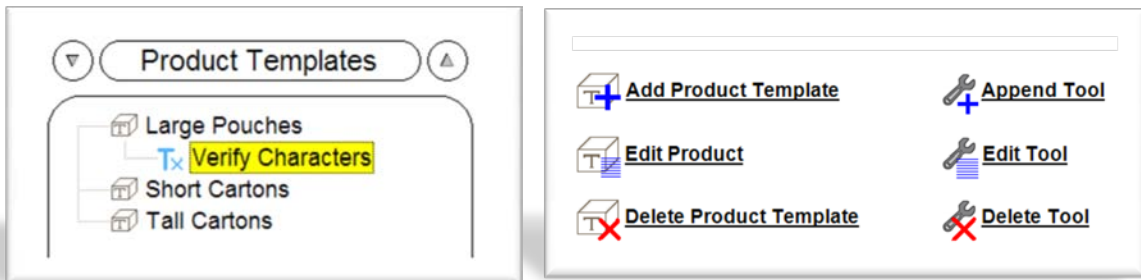
SurePack is easy to use.



The Home screen displays everything an operator needs to know, including the current product, the current user, the system's status, and pass/fail result counters. The operator may also view inspection details and live images.



No programming is required. You need not be a “vision guru” to configure SurePack to inspect new product types. All configuration screens use wizards. Authorized users are stepped through each configuration process. Each step explains what information or action is needed.



Authorized users may create product templates. These templates expedite the creation of new product types.



SurePack is easily configured to save all passed and/or failed images. These images may be reprocessed, enabling authorized users to experiment with different pass/fail criteria. Performing experiments using several thousand images is a valuable tool for optimizing system results.

SurePack™

SurePack is easy to install. This pre-integrated, proven solution includes the camera, processor, optics, lighting, cables, and touchscreen monitor, as well as SurePack software. Most customers choose to purchase it pre-assembled in a 24" x 24" x 10" enclosure. Both NEMA 12 and NEMA 4X enclosures are available.

The optional vision mounting kit with camera enclosure expedites installation and reduces unplanned maintenance.



Display and share information. The 15" color LCD monitor with touchscreen displays detailed information for each inspection tool. There are 32 discrete I/O available for interfacing with a PLC. Allen-Bradley Flex I/O modules are optional. Ethernet and USB ports support archiving of historical images and configuration files.

Benefit from a free project analysis. Let i4 Solutions evaluate your existing process, packaging materials, and production environment. If for some reason SurePack is not an appropriate solution, their expert staff will suggest an alternate technology, or even an alternate vendor.

Take the first step today by contacting i4 Solutions at sales@i4solutions.us.

“Each manufacturer shall control labeling and packaging operations to prevent labeling mixups.”

– 21 CFR Part 820.120(d)

“Manufacturers are responsible for ensuring that food is not adulterated or *misbranded* as a result of the presence of undeclared allergens.”

– FDA Section 555.250